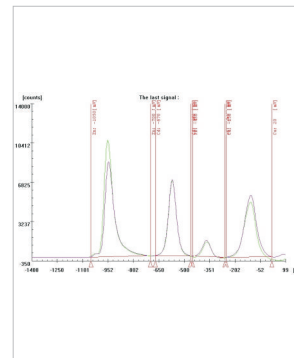


▶ EcaMon 10s



EcaMon 10 is an unattended monitoring system for a continuous measurement of trace and high concentrations of heavy metals and some non-metals in waters, waste waters and technological liquids. There is a possibility to measure several species simultaneously. The system is controlled by a built-in industrial PC and facilitates virtually all kinds of In/Out signal flow including remote control through internet. EcaMon 10 enables the monitoring of tap water, sea water, river waters, mineral waters, some waste waters and cleaned waste waters for metals such as As, Hg, Pb, Cu, Bi, Tl, Cd, Zn, Se, Mn, Fe, Ni, Cr down to the $\mu\text{g/L}$ concentration levels as well as for some non-metals (Cl^- , Br^- , I^- , S^{2-} , PO_4^{3-} , NH_3 , hydrazine, EDTA, bromate, chlorite, ascorbic acid, etc.).




The flow-through pneumatic system with peristaltic pump provides continuous sampling of the analysed sample and supplementary solutions (supporting electrolyte, calibra

tion solution), their accurate dosage and transport during the whole analysis. The closed electrochemical cell with compact electrode system is automatically flushed by the supporting electrolyte during all analyses. The sample is taken from a compact siphon (loop) continuously filled with the sample ensuring fast response.

The basic version comprises:

- ▶ Instrument rack IP54 (IP55 option)
- ▶ Industrial PC with colour monitor, Windows 2000
- ▶ Analytical unit
- ▶ Sample inlet module 1
- ▶ Analog output, 4 - 20 mA
- ▶ Digital IN/OUT signal interface (dry contacts)
- ▶ Elaborated application
- ▶ Software in English
- ▶ Users manual in English

TECHNICAL DATA	
▶ Measuring Cell	EcaCell 353c or EcaCell 104 with three electrodes
▶ Software	<ul style="list-style-type: none"> • Programmable starting and finishing dates, measuring and validation frequencies, automatic evaluation and data storage. • Digital IN/OUT interface (dry contacts) • 4 - 20 mA outputs • RS-232 serial port for communication with PC • Internet connection - remote control (option)
▶ Rack	<ul style="list-style-type: none"> • Wall mounted enclosure, 19" system, 3-part • Wall section containing the power supply and signal output. • Hinged part containing the measuring units (channels), reservoirs and sample inlet module. • Designer glazed door with mini comfort handle for lock inserts. • Viewing window: 3 mm safety glass.
▶ Protection category	IP 54 to EN 60 529/10.91 (IP 55 option)
▶ Weight	50 - 80 kg, configuration dependent
▶ Dimensions	600 x 473 x 746 - 878 mm (Width x Depth x Height)

ORDERING INFO		
PRODUCT	PHOTO	CATALOG NUMBER
▶ EcaMon 10s		01040
▶ Additional cell EcaCell 353c		01001
▶ Additional cell EcaCell 104		01002
Note The actual specification of the system is tailored to the application		